



The Delaware Bayshore

The Opportunity

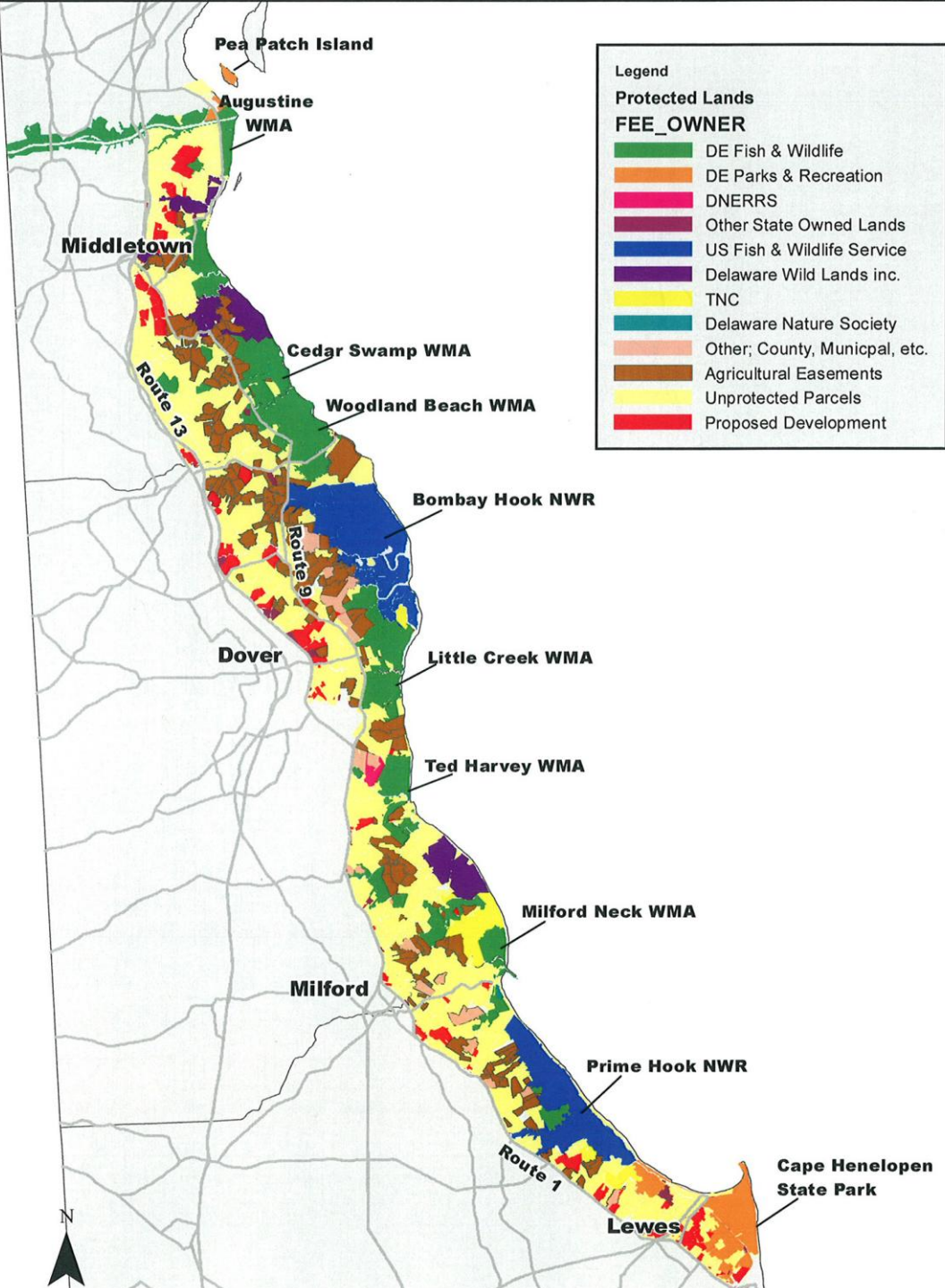
- Enhance the Delaware Bayshore to create a world class conservation area and low-impact recreation destination

Why Delaware Bayshore?

- Widely recognized as area of ecological significance
- Extensive undeveloped coastal habitat supports 500,000+ shorebirds annually
- Key species: shorebirds, migratory songbirds, horseshoe crabs, reeding rails, sparrows , wrens, herons, egrets, terns, raptors, water fowl, globally rare plant species, insects, amphibians
- Diverse habitat: shoreline, coastal marshes, agriculture lands, forests

Where are we today?

- 40th Anniversary of Coastal Zone Act
- Global destination for birders
- Significant land protection: 58% of acreage from Pea Patch Island to Lewes
- Threats to habitat and limited access



Pea Patch Island

Augustine WMA

Middletown

Route 13

Cedar Swamp WMA

Wogland Beach WMA

Bombay Hook NWR

Dover

Milford

Little Creek WMA

Ted Harvey WMA

Milford Neck WMA

Prime Hook NWR

Route 1

Lewes

Cape Henlopen State Park



Specific Areas for Improvement

- Conservation and Restoration
- Recreation and Connectivity
- Engagement and Marketing

Conservation and Restoration

- *Land/Waterway Conservation*: Expand landscape-level conservation, farmland preservation, and habitat connectivity through acquisition/easement of unprotected lands
- *Ecological Restoration*: Enhance critical native habitat and restore waterways, to protect/promote species diversity, reduce flooding, improve water quality, and adapt to climate impacts
- *Resource Protection*: Coordinate enforcement of existing regulations that prohibit trespass, vandalism, poaching, and disturbance to wildlife and habitats

Recreation and Connectivity

- *Connectivity with Local Communities/Waterways:* Focus strategic infrastructure investments to connect wildlife areas to urban centers by enhancing Route 9, the C&D Canal Trail, local hiking trails, and navigable waterways
- *Safe and Healthy Recreational Experiences:* Promote low-impact recreation activities and improve water quality to increase fish and shellfish populations; protect swimmers, seafood consumers, and other users; and maximize enjoyment of outdoor experiences
- *Access Enhancements:* Ensure safe, aesthetically pleasing, and more rewarding wildlife-viewing, photography, and other recreation opportunities in both urban and rural areas.

Engagement and Marketing

- *Visitor Engagement/No Child Left Inside*: Focus educational programming, interpretation, and recreational efforts on inspiring the next generation of environmental stewards.
- *Marketing*: Coordinate with local communities, tourism offices, local business, and residents to aggressively promote the area regionally, nationally and internationally.
- *Volunteerism Promotion*: Engage local residents, community groups, service organizations, schools and business to instill a sense of ownership and stewardship

Examples of Key Partners

- Conservation and Restoration: USFWS, TNC, DNS/NWF, TCF, Wildlands, DU, DOS, PDE, DAWRA, NOAA, Audubon, Sierra, CWAC, etc.
- Recreation and Connectivity: DelDOT, Bike DE, Greenways, ABA, ABC, DE-LITE, etc.
- Engagement and Marketing: Tourism agencies, DAEE, local gov'ts, DEDO and local ED agencies

Leverage Existing & New Resources

- Land Conservation Funds
- DFW Fees / Incentive Programs
- Penalty Funds / CZA Offsets
- Federal LWC
- Bond bill investments
- Private funding

Next Steps

- Agree upon strategic vision
- Identify/Recruit key partners
- Develop Bayshore Action Plan (3 focus areas)
 - Conservation and Restoration
 - Access and Connectivity
 - Programming and Marketing
- Pursue outside funding opportunities (AGO, etc)



America's First National Bayshore?